

Legend

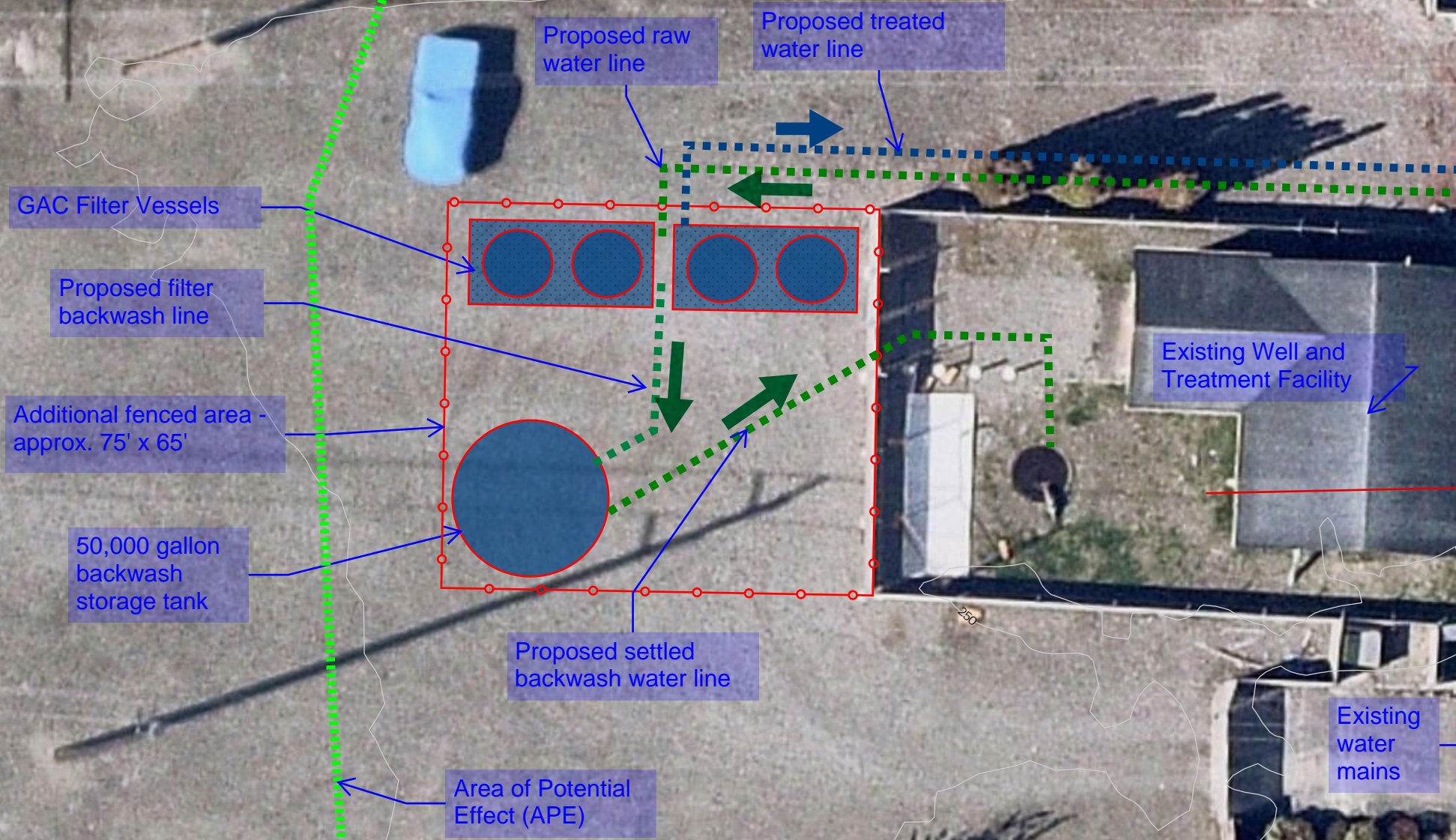
System Valve

- Butterfly, No
- Butterfly, Yes
- Corps Stop, Yes
- Gate, < Null >
- Gate, No
- Gate, Yes
- Oriseal, Yes
- < all other values >

Water Mains

Diameter (in)

- < 4"
- 4"
- 6"
- 8"
- 10"



GAC Filter Vessels

Proposed filter backwash line

Additional fenced area - approx. 75' x 65'

50,000 gallon backwash storage tank

Proposed settled backwash water line

Area of Potential Effect (APE)

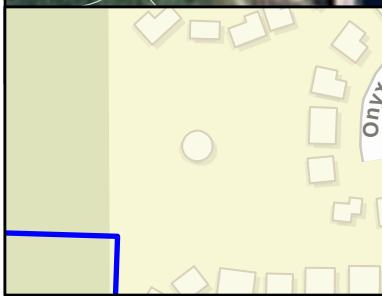
Proposed raw water line

Proposed treated water line

Existing Well and Treatment Facility

Existing water mains

51st Ave Ct W



Country Place Well Site

E sri Community Maps Contributors, City of Tacoma, King County, WA State Parks GIS, © OpenStreetMap, Microsoft, E sri, HERE, Garmin, SafeGraph, GeoTechnologies, Inc, METI/NASA, USGS, Bureau of Land Management, EPA, NPS, US Census Bureau, USDA, E sri Community Maps Contributors, WA State Parks GIS, © OpenStreetMap, Microsoft, E sri, HERE, Garmin, SafeGraph, GeoTechnologies, Inc, METI/NASA, USGS, Bureau of Land Management, EPA, NPS, US Census Bureau, USDA

2023

0 25 50 Feet